



# **Data, Prevention and CPES: An Introduction to the DMHAS Center for Prevention Evaluation and Statistics (CPES) at UConn Health**



---

**TTASC Lunch and Learn**

**Thursday, March 13, 2025, noon – 1 pm**

Jennifer Sussman, Coordinator,  
DMHAS Center for Prevention Evaluation  
and Statistics (CPES) at UConn Health

# Acknowledgements

---



CPES is funded by the Department of Mental Health and Addiction Services (DMHAS) Prevention and Health Promotion (PHP) Unit through SAPT Block Grant funding from the Substance Abuse and Mental Health Services Administration (SAMHSA).

We would like to express our gratitude to our Resource Link partner, TTASC, for hosting today's Lunch and Learn and inviting us to share our work.



# Learning Objectives

---



By the end of this session, participants will be able to:

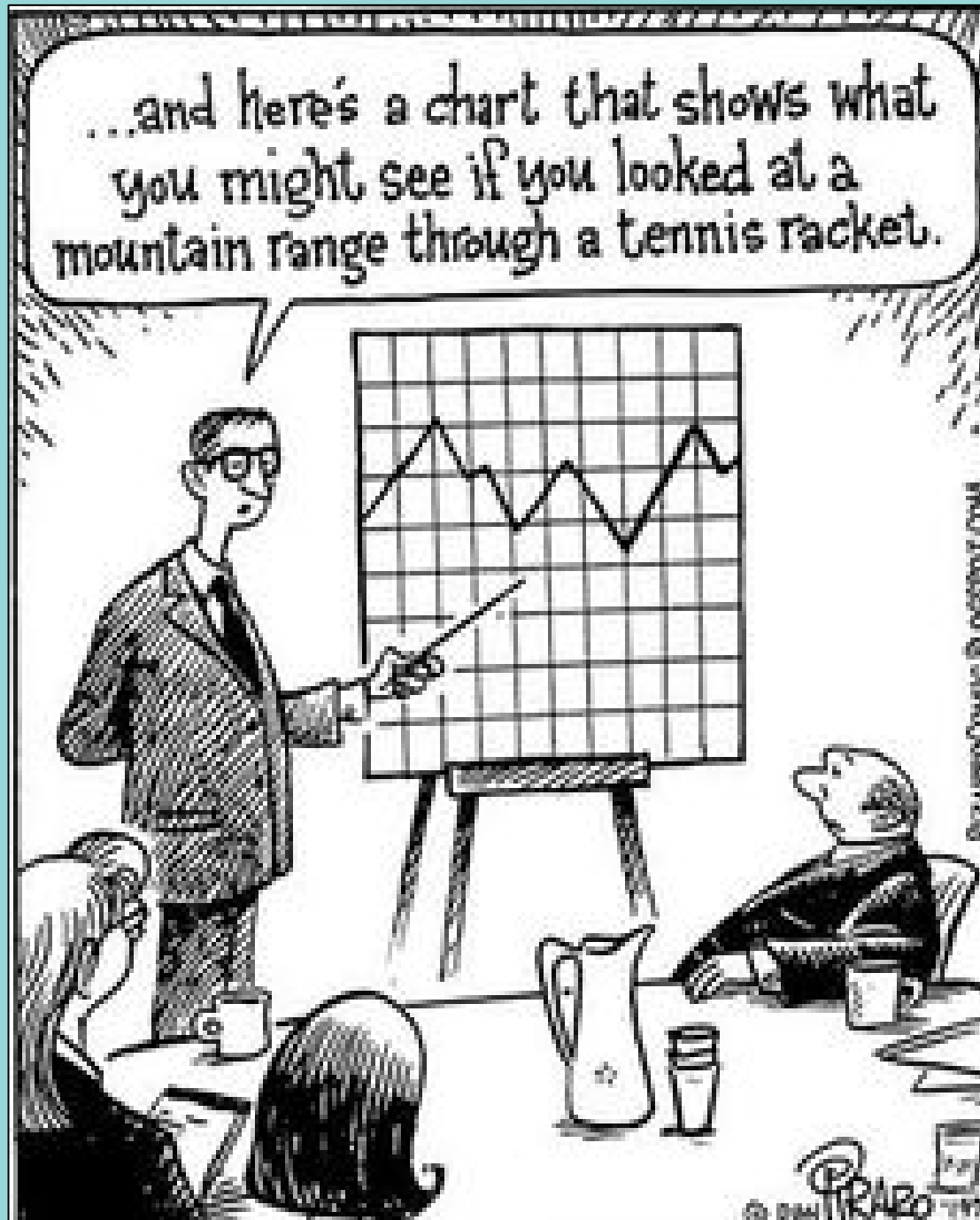
- Recognize the important role data plays in prevention and health promotion processes;
- Identify public access points and resources for behavioral health data relevant to prevention and health promotion;
- Understand the role and offerings of CPES as DMHAS' data and evaluation Resource Link.



## How would you describe your relationship with data?

- I love data. *Data and I are besties!*
- I am an expert at utilizing data.
- I am comfortable using data but feel I could be better.
- I am a newbie to the data world.
- Data? *What is data?*
- Ugh, data 😞

***If this is  
what you  
see when  
you look  
at a line  
graph***



***We can  
help!***  
😊

# data

*noun* [ U ]

US  /'deɪ.tə, 'dæʃ.ə, 'dɑː.ə/



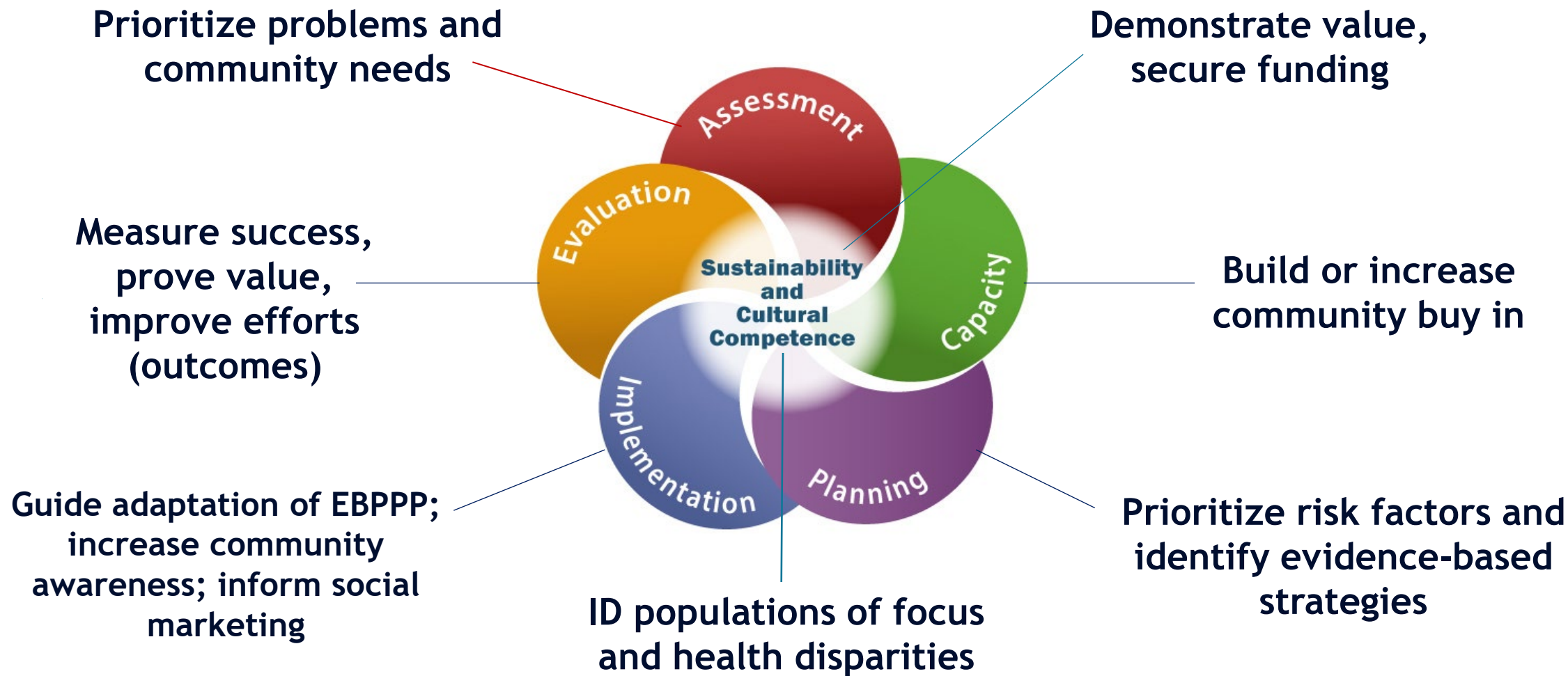
---

MATHEMATICS, SCIENCE

**information collected for use:**

- *They had data on health, education, and economic development.*

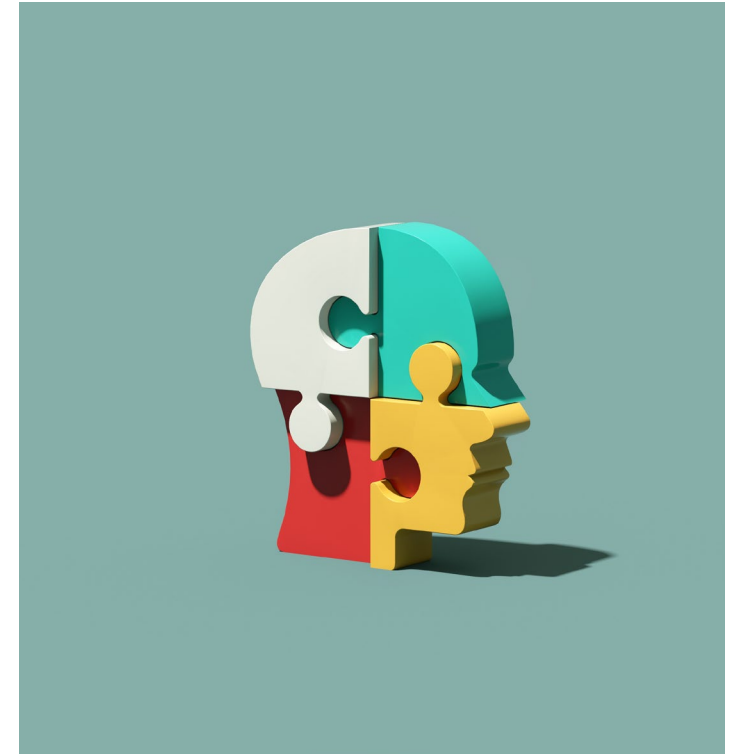
# Uses of Data: The Strategic Prevention Framework



# Prevention and Health Promotion: Types of Data

---

- Prevalence (surveys, statistics);
- Incidence/consequence (hospital, treatment, MV crashes);
- Risk and protective (resilience) factors;
- Community attitudes and beliefs;
- Social Determinants of Health (SDOH);
- Data on capacity, resources, gaps and needs.





# Prevention and Health Promotion Data: Where to find it

## Publicly available data can be found in:

- **Data portals:** often contain data from a variety of sources, and in various forms;
- **Dashboards:** Interactive, Allowing visual comparison of data elements and levels;
- **Reports and articles:** do the analysis and interpretation for you;
- **State or national surveys.**

## Proprietary data can be accessed by request from:

- State agencies;
- Community partners;
- Researchers.

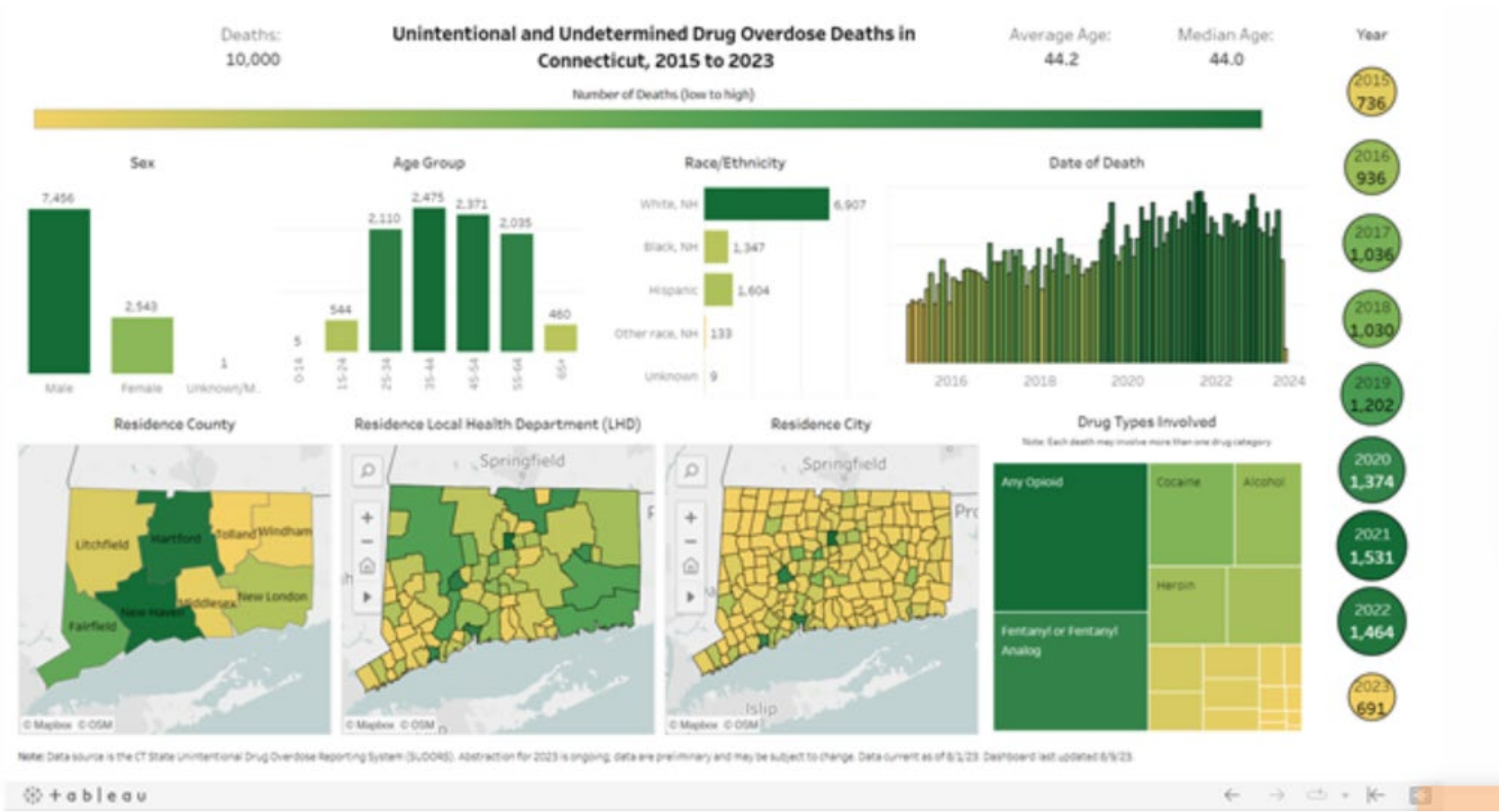
## Locally collected data:

- Gathered from within your community, via surveys, focus groups and listening sessions.

# Data Dashboards



# CT SUDORS Overdose Dashboard





# CT Crash Data Dashboards



Crash Summary Dashboards



Vehicle Summary Dashboards



Person Summary Dashboards

# Portals and Repositories



# CT Repositories and Portals



## CT Open Data Portal

state agency data provided by legislative mandate

## CT Data Collaborative

data by topic, data capacity building, special projects, State Census Data Center

## Department of Public Health

vital statistics, disease, opioids, CSHS (YRBSS), BRFSS

## State Department of Education (EdSight)

school and student data

## CT DataHaven

community wellbeing and equity data

## SEOW Prevention Data Portal

behavioral health data and products



## SAMHSA National Survey of Drug Use and Health (NSDUH) Results

- 2021 national summary and state-level data available
- Summary trend data available through 2018
- Interactive NSDUH State Estimates

### SAMHSA Data Archives

Various databases for download and access

- NSDUH 2-yr, 4-yr, 6-yr, state, and sub-state data for crosstab analysis

## CDC Youth Risk Behavior Surveillance System (YRBSS)

Summary data at national level and by state (CT School Health Survey)

Data explorer tool

## CDC WONDER

Statistical research data published by CDC

## KIDSCOUNT DATA CENTER

- Project of Annie E. Casey Foundation
- Data on children and families at the national and state levels



TREVOR PROJECT National Survey on the mental health of LGBTQ+ youth (2024)

# CT Open Data Portal













## Welcome to Connecticut Open Data

Search or browse public data provided by Connecticut State Agencies

Search for Data

Prescription Monitoring (PMP) data  
now available (including dashboards!)

Browse Data by Topic

 <b>Government</b> Includes information on state government operations and assets including spending and taxes	 <b>Business</b> Includes information on businesses in Connecticut including assistance programs and licensing	 <b>Education</b> Includes education and early childhood data	 <b>Environment and Natural Resources</b> Includes a variety of agricultural and environmental data including environmental hazards
 <b>Health and Human Services</b> Includes data on public health, social services, child welfare and other related agencies	 <b>Housing and Development</b> Includes housing stock, affordability, and other information related to land development	 <b>Public Safety</b> Includes crime reports, fire incidents, corrections, and other safety related information	 <b>Transportation</b> Includes data on transportation infrastructure, traffic, mass transit, and motor vehicles
 <b>Local Government</b> Information on municipal government including grand lists and mill rates,	 <b>Maps and Geospatial</b> Maps generated from datasets and downloadable geospatial data	 <b>Tax and Revenue</b> Data on income, sales, and other taxes and tax credits related to state government.	 <b>Browse All Data</b> Not sure which category? Search and browse the entire catalog

- Office of Policy and Management (OPM) initiative mandated by Governor's Executive Order 39
- State Agency Data Officers responsible for sharing data to the Portal
- First stop for publicly available data
- Data visualization, search, and download capabilities
- Data vetted through use
- P20Win data linkage projects

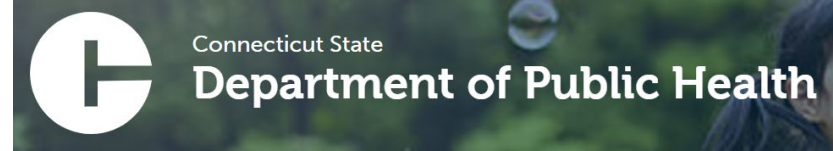


- Built on the goal of **democratizing access to public data** and building data literacy
- [Connecticut's State Census Data Center](#)
- CT town profiles (Advance CT)
- Hartford Neighborhood Voter Explorer
- Data topics:
  - Business & economy
  - Children/ & families
  - Civic engagement
  - Criminal justice
  - Demographics & population
  - Education
  - Health & healthcare
  - Housing data profiles (eviction dashboard)
  - Hartford/ regional/town data
  - Migration

CTData.org  
[ctdata.org/census](https://ctdata.org/census)



# CT Department of Public Health

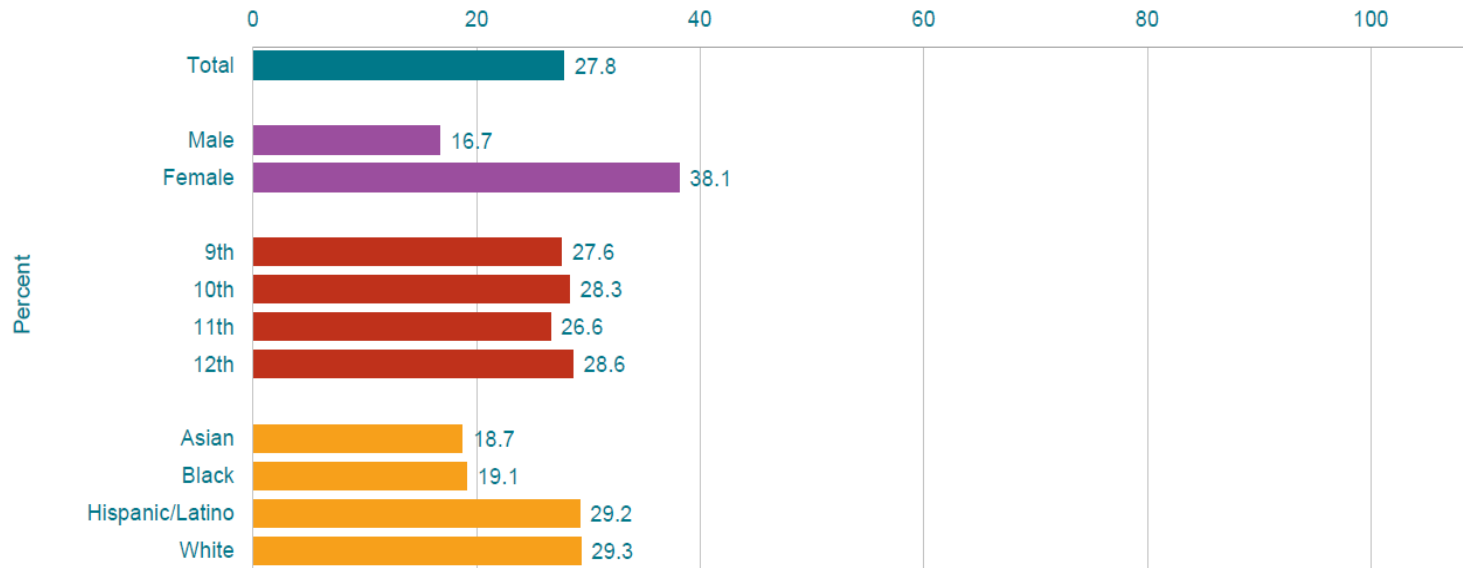


<b>Chronic Disease and Injury Surveillance</b>	<ul style="list-style-type: none"> <li>• Asthma, Cancer, Diabetes, etc.</li> <li>• Drug Overdose Report</li> <li>• Injury Surveillance</li> <li>• Tobacco Use Prevention/Control</li> <li>• EpiCenter, DPH Syndromic Surveillance System</li> </ul>
<b>Environmental</b>	<ul style="list-style-type: none"> <li>• Environmental Public Health Tracking</li> </ul>
<b>Health Care Equity and Quality</b>	<ul style="list-style-type: none"> <li>• Community Health Center Data</li> <li>• Quality in Health Care Program Reports</li> <li>• Health Database Compendium</li> <li>• Health Disparities</li> <li>• Hospitalization Statistics</li> </ul>
<b>Health Information Systems</b>	<ul style="list-style-type: none"> <li>• <u>Behavioral Risk Factors (BRFSS)</u></li> <li>• Mortality/Deaths</li> <li>• <u>Population Statistics</u></li> <li>• Vital Statistics</li> <li>• <u>Youth Risk Behavior Survey (CT School Health Survey)</u></li> </ul>
<b>Infectious Diseases</b>	<ul style="list-style-type: none"> <li>• Infectious Disease Statistics</li> <li>• HIV/AIDS</li> </ul>
<b>Maternal and Child Health</b>	<ul style="list-style-type: none"> <li>• Infant Mortality</li> <li>• WIC Participation/Improved Birthweight Outcomes</li> <li>• Racial and Ethnic Disparities in Low Birthweight</li> </ul>
<b>Tumor Registry</b>	
<b>Hospital and ED data (CHIME, ICD-10 codes)</b>	<ul style="list-style-type: none"> <li>• Feeds Syndromic Surveillance System</li> </ul>

# CT School Health Survey (CT YRBS)



Percentage of High School Students Who Reported That Their Mental Health Was Most of the Time or Always Not Good,\* by Sex,<sup>†</sup> Grade, and Race/Ethnicity,<sup>‡</sup> 2023



\*Including stress, anxiety, and depression, during the 30 days before the survey

<sup>†</sup>F > M; H > A, H > B, W > A, W > B (Based on t-test analysis, p < 0.05.)

All Hispanic students are included in the Hispanic category. All other races are non-Hispanic.

This graph contains weighted results.

- Also referred to as the CT Youth Risk Behavior Survey (YRBS)
- Biennial student survey, grades 9-12
- Statewide weighted sample
- Focus on health risk behaviors
- Demographic breakdowns by gender, race/ethnicity, and sexual identity and preference
- Comparable to national YRBS

# CT State Department of Education: EdSight

- 5-year graduation rates
- Enrollment, absentee rates
- Suspensions/expulsions
- School district data
- Profile and performance reports (CT Report Cards)



The screenshot shows the EdSight website interface. At the top left, there is a logo for CT.GOV | EDSIGHT. Below this is a navigation menu with links for Overview, Students, Educators, Instruction, and Performance. The main header features the EdSight logo and the text "Connecticut's official source for education data". On the right side, there is a box for "Connecticut Report Cards" with a bar chart icon, a description: "Visual, multi-year reports with up-to-date district and school metrics", and a "View Report Cards" link. Below the header, there is a large white box with the text "Welcome to EdSight" and "Interactive data portal for Connecticut's public districts, schools, and programs".

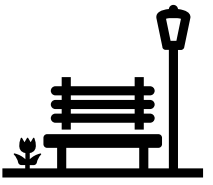
CT.GOV | EDSIGHT

Overview Students Educators Instruction Performance

**EdSight**  
Connecticut's official source for education data

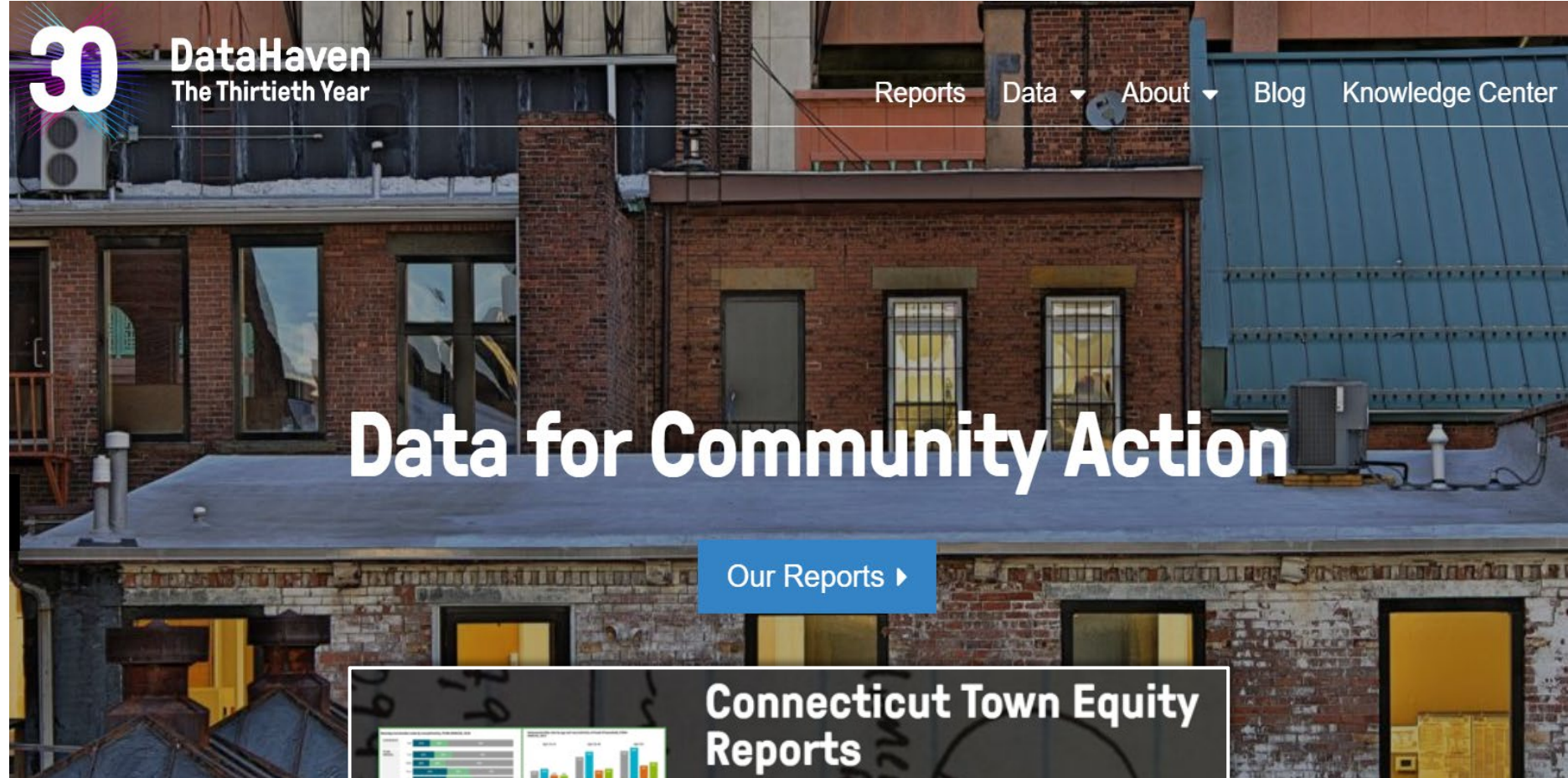
**Connecticut Report Cards**  
Visual, multi-year reports with up-to-date district and school metrics  
[View Report Cards](#)

**Welcome to EdSight**  
Interactive data portal for Connecticut's public districts, schools, and programs



# CT Data Haven

- **Community Wellbeing Survey** provides quality of life, health equity, and civic vitality data by community type (5 CTs)
- **Town and Regional Equity Profiles**
- **Community-level and neighborhood data** available
- **Works closely with CT hospitals** to provide health assessment data
- **Raw data not publicly available but open to analysis requests**



### Connecticut Town Equity Reports

Reports featuring disaggregated CT town data on social and economic well-being and equity

# Connecticut SEOW Prevention Data Portal

Bringing together Connecticut's epidemiological data in support of a comprehensive public health approach to substance abuse prevention and health promotion.

# Epidemiological Profiles

- Data products of the State Epidemiological Outcomes Workgroup (SEOW)
- Utilize epidemiological data pertaining to prevalence, risk factors, consequences, impact, and populations at risk for existing and emerging issues.
- Updated biennially with the most up to date data available.

2022 Connecticut Epidemiological Profile: Alcohol

*A product of the State Epidemiological Outcomes Workgroup (SEOW)*

**Prevalence**

Alcohol continues to be the most commonly used substance nationally and in Connecticut. Alcohol use prevalence in CT has in fact remained higher than the nation since 2010, and CT has been among the 10 states with highest prevalence most/all of these years.<sup>1</sup>

Overall, NSDUH shows that the prevalence of alcohol use in Connecticut among the general population has remained relatively stable; the prevalence of past 30 day alcohol use in individuals 12 and older was 59.32% in 2019.<sup>2</sup>

The 2021 Connecticut School Health Survey (CSHS) also reported lower prevalence of past 30 day alcohol use in Connecticut's high school students compared to their national counterparts (18% vs 23%).<sup>3</sup>

The Connecticut School Health Survey (CSHS), CT's Youth Risk Behavior Survey, also shows that the reported prevalence of past month alcohol use and binge drinking among Connecticut high school students has steadily declined since 2005 (Figure 1).

In the 2021 CSHS, 17.3% % of high school students reported using alcohol in the past month. Of these students, 7.0% of them reported binge drinking\* in the past month.<sup>3</sup> However, caution should be taken when comparing the 2021 data to that of previous years because the 2021 CSHS was collected during a different semester than in previous years (Fall vs Spring).

prevalence of past month drinking (22.4%) and binge drinking (10.3%). Hispanic and Black students' reported prevalence of past month (13.7% and 12.1% respectively) and binge drinking (4.0% and 3.3%, respectively) were similar between the two groups.<sup>3</sup>

Among individuals 12 years and older, those reporting alcohol use disorder (AUD) in the past year was relatively stable from 2016 to 2019, at about 6%. However, the 2021 NSDUH data indicates an increase in reported AUD for this age group (10.3%).<sup>2</sup>

**Coming soon!**  
**Expanded State-Regional Profiles**

<sup>1</sup> NSDUH 2018-2019  
<sup>2</sup> NSDUH 2021

<sup>3</sup> CSHS 2021

1

Updated September 2023

# DMHAS Regional Data Stories

## DMHAS Regional Data Stories

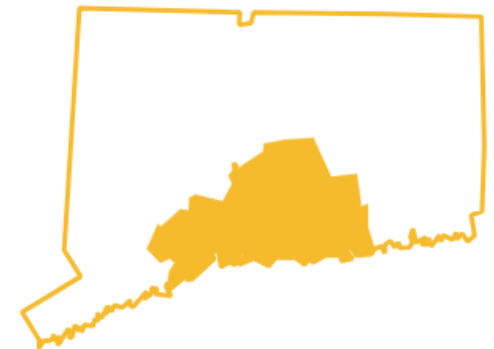
are interactive data visualizations, using cross-sector data, that describe behavioral health characteristics of the five CT DMHAS regions.

Regional interactive data stories show cross-sector data that describe general characteristics of each of five DMHAS regions.

### Southwest CT



### South Central CT

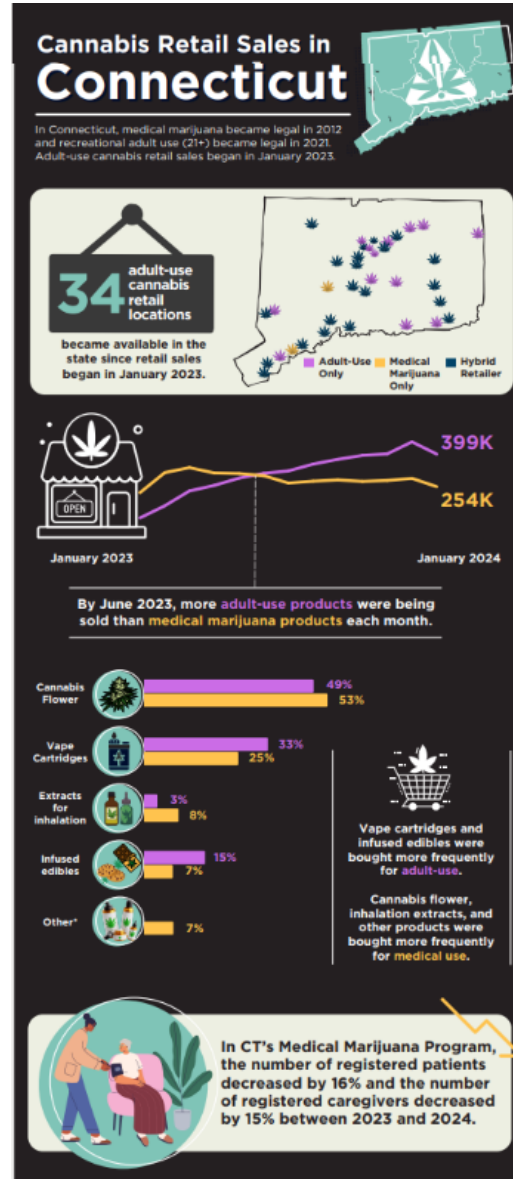




# Products and Resources

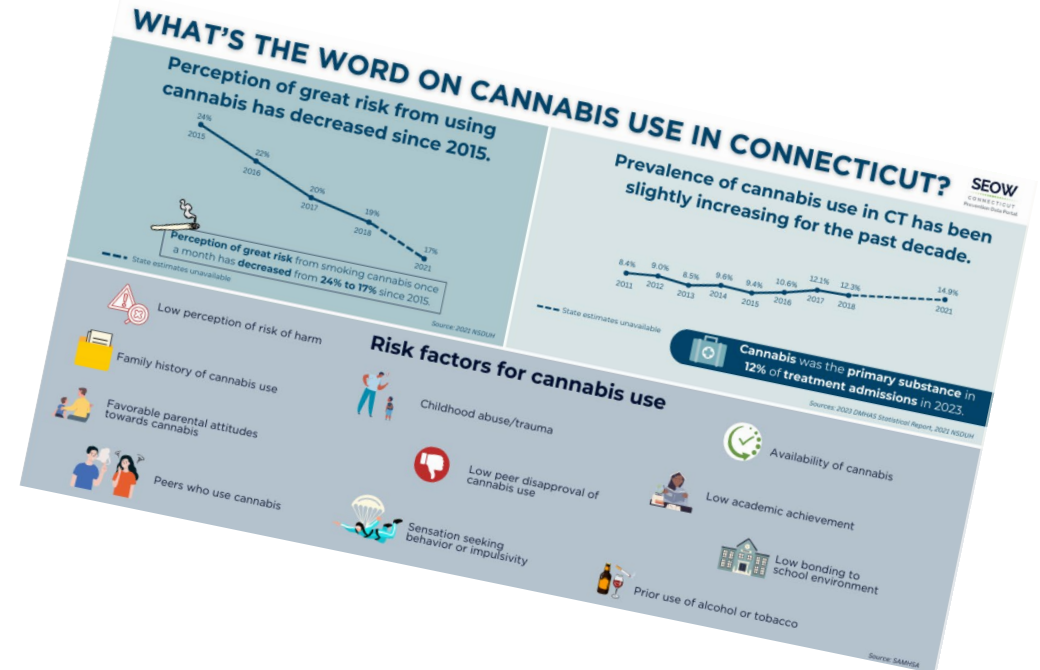
## Data-driven products:

- Presentations
- Info Briefs
- Reports
- Guidance documents

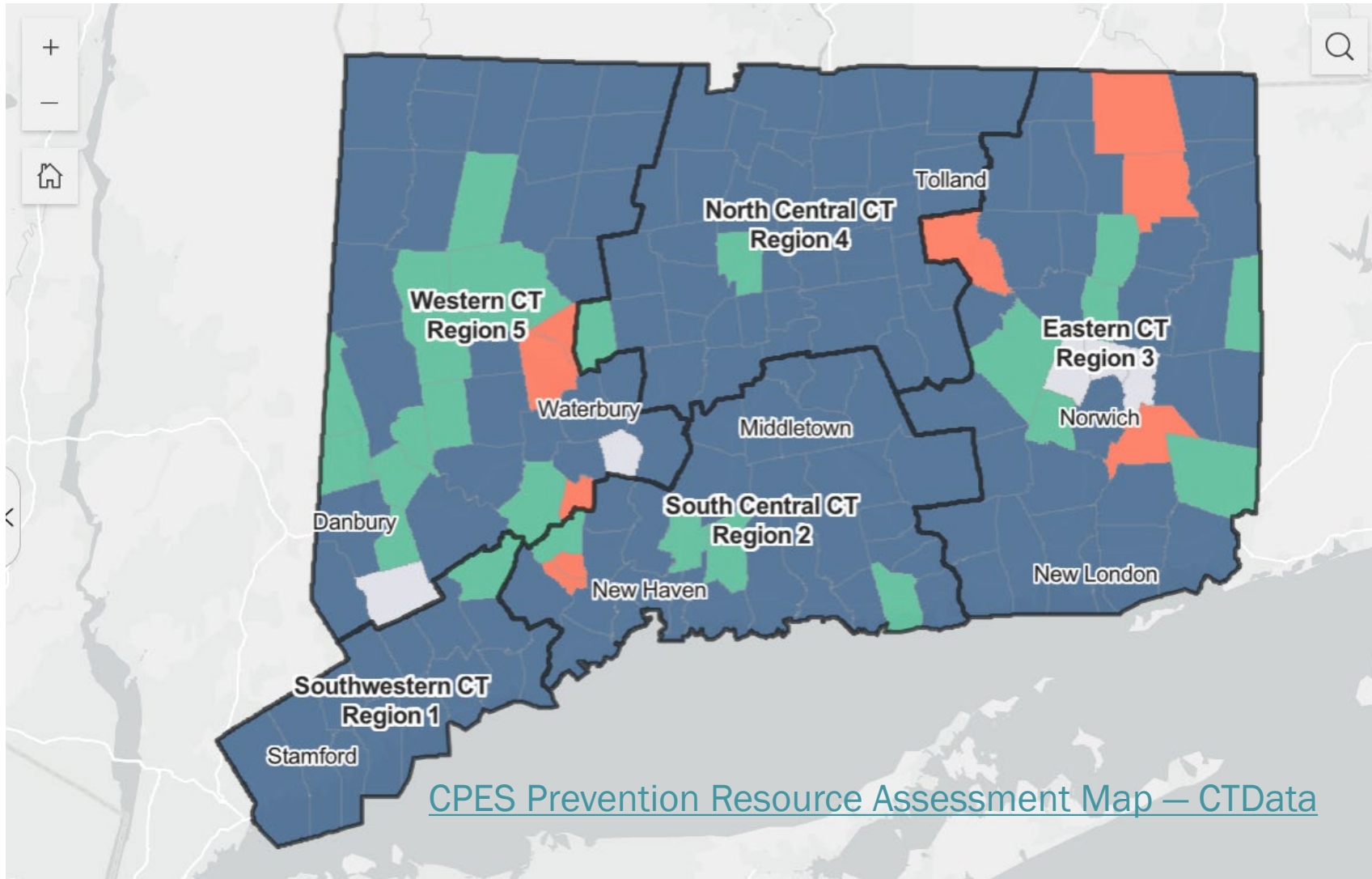


## Annotated data visualizations

- Graphs
- Charts
- Maps



# Connecticut Substance Use Primary Prevention: An Interactive Map



Use map filters to explore:

- Funding type
- Prevention strategies
- Overlay community type

Hover over towns to see town-level contact, funding, and strategy information.

# Portal Re-Design: Proposed Improvements

- Simplified landing page
- Stepwise drill down to downloadable data by key issue
- Addition of infographic info briefs by substance/issue
- Re-design of epidemiological profiles
  - Visual, headline driven
  - Regional data
- Re-organization of products by type/area of focus
- Restructure of core data library (indicator matrix)
  - Simplified search interface
  - Indicators grouped by substance/ issue
  - Assignment of SEOW data quality ratings

# Content Drilldown Structure



**Topic Tile (Cannabis)**

**Summary Infographic  
with link to epi profile**

**Selected visualized  
data elements**

**Downloadable data  
elements**



# The DMHAS Center for Prevention Evaluation and Statistics (CPES) at UConn Health

A DMHAS funded **Resource Link**, managed by

**UConn**  
HEALTH

to:

- **Identify, collect, analyze, interpret and disseminate data** relevant to substance use prevention and mental health promotion;
- **Track behavioral health indicators;**
- **Develop and maintain an interactive data portal** for use by DMHAS, its partners, and others;
- **Share findings** via data-driven products, reports, epidemiological profiles, and presentations;
- **Provide research and statistical expertise and support;**
- **Provide training, capacity building, and technical assistance** on evaluation and use of data.

# CPES Core Functions



Data Curation

Evaluation

Capacity Building

# Data Curation



SEOW Prevention Data Portal



Social Media

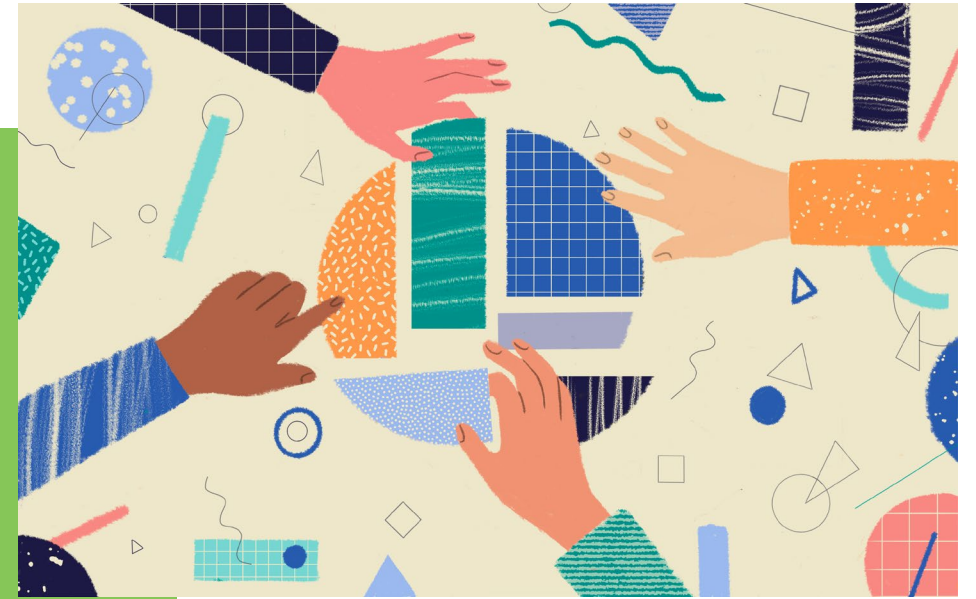


Data Products

- Epi profiles
- Info briefs
- Slide decks
- Presentations
- Dashboards



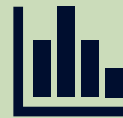
Statewide  
Epidemiological  
Outcomes  
Workgroup (SEOW)



## CPES Data Core



Analysis and Visualization Team



Product Development Team

# Evaluation



Develop plans and instruments to assess progress, outcomes, and impact of DMHAS-funded prevention initiatives



Collect and compile data



Share results and recommendations



## Project Evaluation Teams



- Partnerships for Success (PFS)
- Preventing Drug Overdose (PDO)
- State Opioid Response (SOR)



# Capacity Building

Increase the capacity of prevention partners to utilize data for needs assessment, strategic planning and evaluation through:



Guidance documents, templates, worksheets



Trainings, presentations, workshops



TA consultation, Office Hours



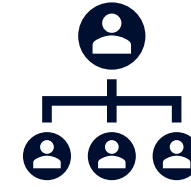
Instrument development

## Implementation Support Team



- Regional Priority Report process
- DMHAS community initiatives
- Local Evaluation Workgroup

# Meet the Team



**Megan O'Grady, PhD**  
**Director**

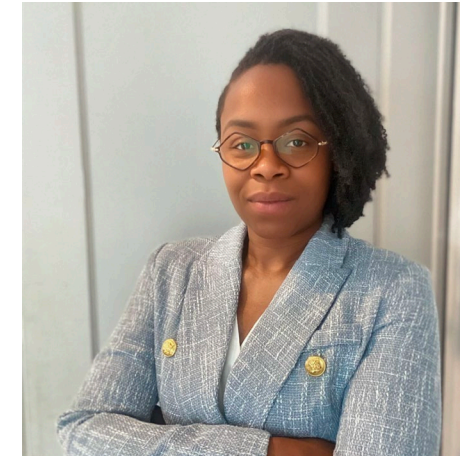
Associate Professor, Department  
of Public Health Sciences

**Focus Areas:**  
Management  
Planning  
Grants and contracts



**Jennifer Sussman, BA, MFA**  
**Coordinator**  
Research Associate 3

**Focus Areas:**  
Data Curation  
Capacity Building  
Regional Planning Process  
(Data Core)



**Marsha Murray, MS**  
**Senior Manager**  
Research Associate 3

**Focus Areas:**  
Evaluation  
Product development  
Branding  
Management processes  
(Data Core)

## Team Management

# Meet the Team



**Janice Vendetti, MPH**  
Research Associate 3

**Focus Areas:**  
Analytical guidance  
Data planning  
Mentorship  
(Data Core)



**Christine Guerette, MS**  
Clinical Research Assistant

**Focus Areas:**  
Data analysis  
Instrument development  
Evaluation Support  
(Data Core)

**Analytics**



**Yang Liu, MPH**  
Graduate Assistant

**Focus Areas:**  
Analytical support  
Epi profile development  
Data management  
(Data Core)

# Meet the Team



**Alversia Wade, MPH**  
Clinical Research Assistant

**Focus Areas:**  
Evaluation support  
Implementation support  
Data product development  
(Data Core)



**Alison Wisner, MSW**  
Clinical Research Assistant

**Focus Area:**  
Evaluation Support



**Sydney Tabor, MPH**  
Clinical Research Assistant

**Focus Areas:**  
Evaluation Support  
Data product development  
(Data Core)



**Adekemi (Kemi) Suleiman, MPH**  
Graduate Assistant

**Focus Areas:**  
Evaluation Support  
Epi profile development

**Evaluation**

# Meet the Team



**Shayna Cunningham**  
Assistant Professor, DPHS

**Focus Areas:**  
Community-based Research  
Maternal and Child Health



**Mayte Restrepo Ruiz, PhD**  
Assistant Professor, DPHS

**Focus Areas:**  
Women's rights  
Trauma/ACES research



**Bonnie McRee, PhD**  
Assistant Professor, DPHS

**Focus Areas:**  
Health Service Research  
SBIRT



**Morica (Rica) Hutchinson, PhD, LMFT**  
Post Doctoral Research Associate

**Focus Areas:**  
Substance Use Prevention Research  
Suicide Prevention

## Affiliated Faculty and Staff



**What  
can  
we  
do  
for  
you?**



**ANSWER  
QUESTIONS**



**CONDUCT  
TRAINING**



**DIRECT YOU  
TO DATA**



**PROVIDE  
GUIDANCE**



**SHARE INFORMATION,  
TOOLS, AND PRODUCTS**



**UConn**  
HEALTH

# Thank you

---

**Jennifer Sussman**  
**sussman@uchc.edu**



<https://preventionportal.ctdata.org/>